

Step 1. Copy BMC image to DUT by SCP

1) Confirm MGMT port ifconfig of DUT BMC.

```
Ifconfig eth0
```

2) Transmit new BMC image to DUT BMC via MGMT port with SCP.

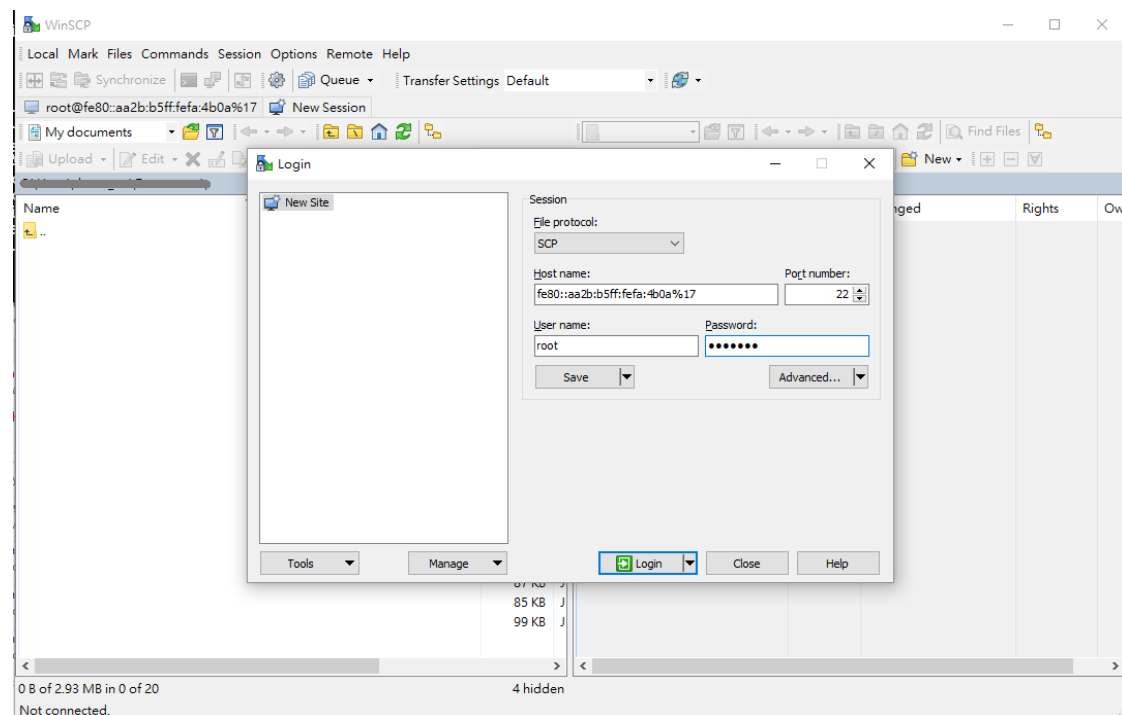
[Example]

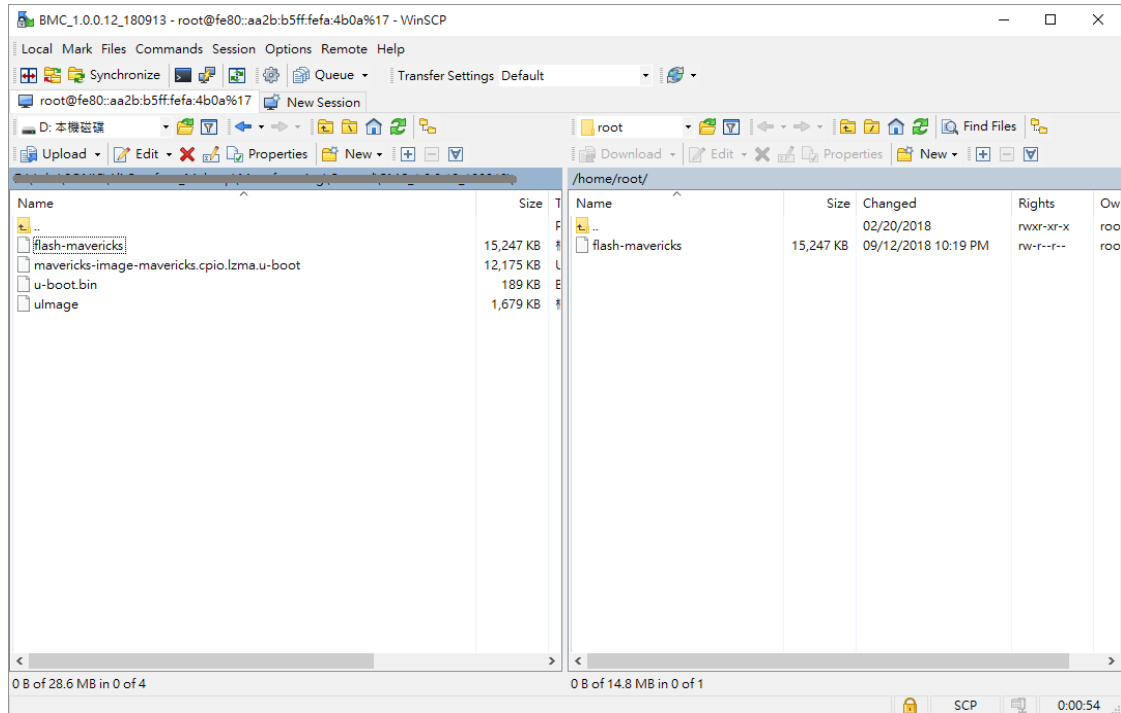
(Get DUT BMC MGMT port ifconfig)

```
root@bmc:~# ifconfig eth0
eth0      Link encap:Ethernet  HWaddr A8:2B:B5:FA:4B:0A
          inet6 addr: fe80::aa2b:b5ff:fefa:4b0a/64 Scope:Link
          UP BROADCAST RUNNING MULTICAST  MTU:1500  Metric:1
          RX packets:2483 errors:0 dropped:0 overruns:0 frame:0
          TX packets:817 errors:0 dropped:0 overruns:0 carrier:0
          collisions:0 txqueuelen:1000
          RX bytes:0 (0.0 B)  TX bytes:0 (0.0 B)
          Interrupt:3
```

```
root@bmc:~#
```

(Transmit new BMC image to DUT via STFP. UserName/Password: root/OpenBmc)





Step 2. Install new BMC image

1) Confirm original BMC version and built date.

```
cat /etc/issue
cat /etc/version
```

2) Check MTD configuration.

```
cat /proc/mtd
```

3) Install new BMC image (flash-mavericks) to MTD(flash0).

```
flashcp -v flash-mavericks /dev/mtd5
```

4) Reboot BMC to finish the installation.

```
reboot
```

*** Do not power off DUT during installation.**

[Example]

... (Omit boot up and log-in messages)

(Copy BMC image to DUT BMC by SCP)

```
root@bmc:~# ls
```

```
flash-mavericks
```

```
root@bmc:~#
```

(Confirm original BMC version)

```
root@bmc:~# cat /etc/issue
```

```
OpenBMC Release 1.0.0.9
```

```
root@bmc:~# cat /etc/version
```

```
201802201148
```

```
root@bmc:~#
```

(Check MTD configuration)

```
root@bmc:~# cat /proc/mtd
```

```
dev:   size  erasesize  name
mtd0: 00060000 00010000 "u-boot"
mtd1: 00020000 00010000 "env"
mtd2: 00280000 00010000 "kernel"
mtd3: 00c00000 00010000 "rootfs"
mtd4: 01100000 00010000 "data0"
mtd5: 02000000 00010000 "flash0"
root@bmc:~#
```

(Install new BMC image to MTD(flash0) and reboot DUT to finish the installation)

```
root@bmc:~# flashcp -v flash-mavericks /dev/mtd5
```

```
Erasing block: 239/239 (100%)
```

```
Writing kb: 15246/15246 (100%)
```

```
Verifying kb: 15246/15246 (100%)
```

```
root@bmc:~# reboot
```

... (Omit reboot and log-in messages)

(Confirm version number again)

```
root@bmc:~# cat /etc/issue
```

```
OpenBMC Release 1.0.0.12
```

```
root@bmc:~# cat /etc/version
```

```
201809131222
```

```
root@bmc:~#
```