



Technical Guide

External Captive Portal for Hotspot

Copyright Notification

Edgecore Networks Corporation

© Copyright 2018 Edgecore Networks Corporation.

The information contained herein is subject to change without notice. This document is for informational purposes only and does not set forth any warranty, expressed or implied, concerning any equipment, equipment feature, or service offered by Edgecore Networks Corporation. Edgecore Networks Corporation shall not be liable for technical or editorial errors or omissions contained herein.

Table of Contents

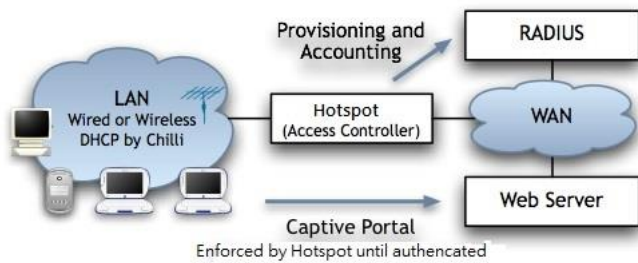
Revision.....	2
Introduction.....	3
Flow Diagram.....	4
Hotspot redirect client to Captive Portal until authenticated.....	5
Client submits credential to Hotspot.....	6
Hotspot redirect client to Captive Portal after login success.....	7
External Captive Portal example.....	8

Revision

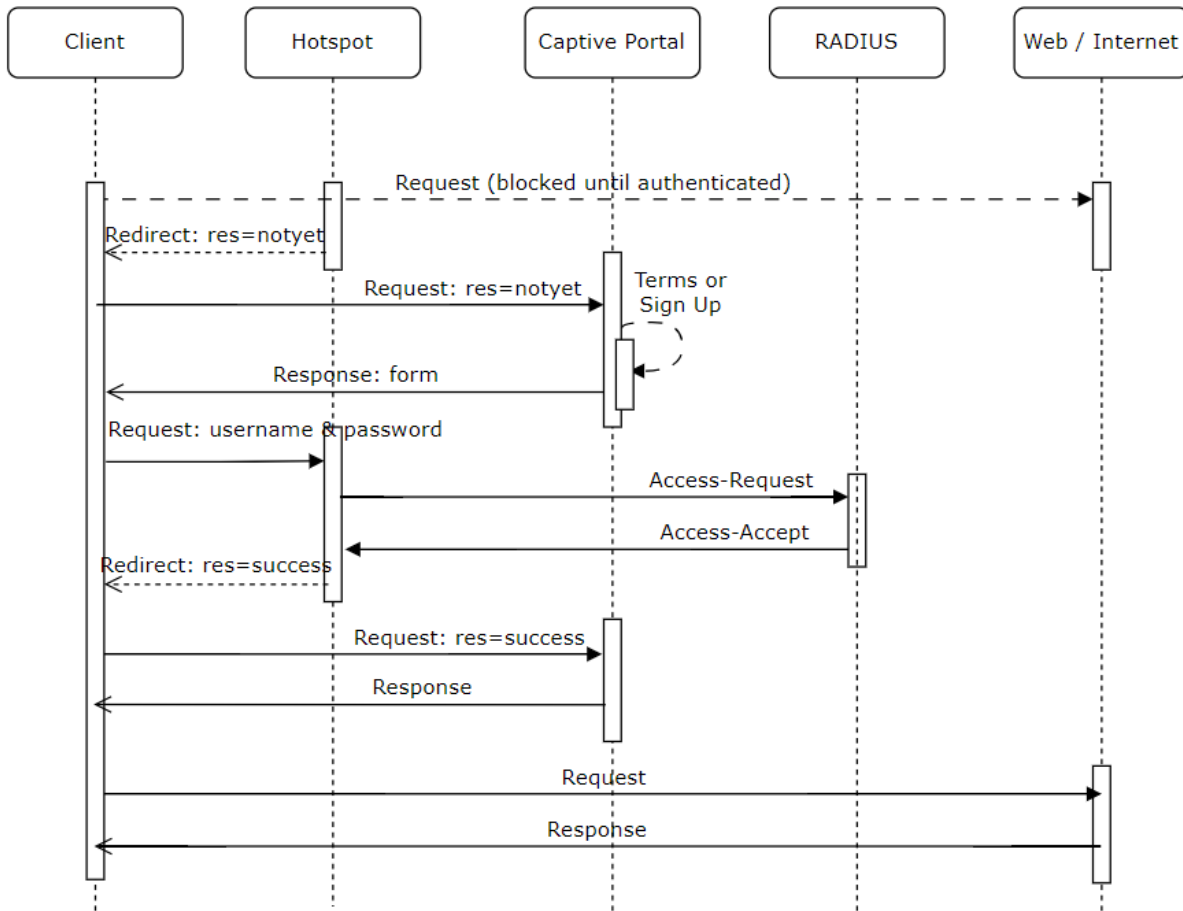
Firmware version	Supported Model	Date	Author	Remarks
V12.0.0 or later	EAP, OAP	07 th Apr 2024	Casper Wu	1 st revision

Introduction

This document provides an explanation on how Hotspot will redirect client to external captive portal before and after login success



Flow Diagram



Hotspot redirect client to Captive Portal until authenticated

When client browse web site before authenticated, Hotspot redirect client to captive portal with below parameters:

- res=notyet
- nasid=nas01
- uamip=192.168.182.1
- uamport=3990
- ssid=Hotspot
- sessionid=170972157400000001
- md=BB6E6C8D874B2C4AD5F63E6437BEB221
- challenge=19bb597da7d85dae3fe939934140ead3
- called=E0-01-A6-AA-AA-AA
- mac=00-CC-CC-CC-CC-CC
- ip=192.168.182.10
- userurl=http://www.example.com/

Client submits credential to Hotspot

Below is an example, after client sends credential for authentication.

Username	<input type="text"/>
Password	<input type="password"/>
<input type="submit" value="Login"/>	

```
<html>
<head>
<title>Login</title>
</head>
<body>
<form method="post" action="http://192.168.182.1:4990/www/login.chi">
<table border="0" cellpadding="5" cellspacing="0">
  <tr><td>Username<td><input name="username" type="input">
  <tr><td>Password<td><input name="password" type="password">
</table>
<input type="submit" value="Login">
</form>
</body>
</html>
```

Hotspot redirect client to Captive Portal after login success

After user is authenticated, Hotspot redirects client to captive portal with below parameters:

- res=**success**
- uid=radius_user
- nasid=nas01
- redirurl=http://www.edge-core.com/
- uamip=192.168.182.1
- timeleft=660
- uamport=3990
- ssid=Hotspot
- sessionid=170972157400000001
- md=C1CA7B8B01E686BD1F8DF8ED4E5305FF
- called=E0-01-A6-AA-AA-AA
- mac=00-CC-CC-CC-CC-CC
- ip=192.168.182.10
- userurl=http://www.example.com/

External Captive Portal example

Captive portal response depends on value of “res” parameter (below is an example)

- res=success, redirects client to URL of “redirurl” (Landing) or “userurl” (Original Requested)
- res=already, same as res=success
- res=failed, warning that username / password was not valid
- res=notyeh, show page for submit username and password to Hotspot

```

<?
$res = $_REQUEST["res"];
if ($res == 'success' || $res == 'already') {
    $url = $_REQUEST["redirurl"];
    if ($url == "") {
        $url = $_REQUEST["userurl"];
    }
?>
<meta http-equiv="refresh" content="5;url=<?= $url; ?>">
<?
    } elseif ($res == 'failed') {
        $msg = "Username and/or password was not valid";
        echo $msg;
    } else {
        $uamip = $_REQUEST["uamip"];
        $url = "http://${uamip}:4990/www/login.chi";
?>
<html>
<head>
<title>Login</title>
</head>
<body>
<form method="post" action="<?= $url ?>">
<table border="0" cellpadding="5" cellspacing="0">
    <tr><td>Username<td><input name="username" type="input">
    <tr><td>Password<td><input name="password" type="password">
</table>
<input type="submit" value="Login">
</form>
</body>
</html>
<?
    }
?>

```